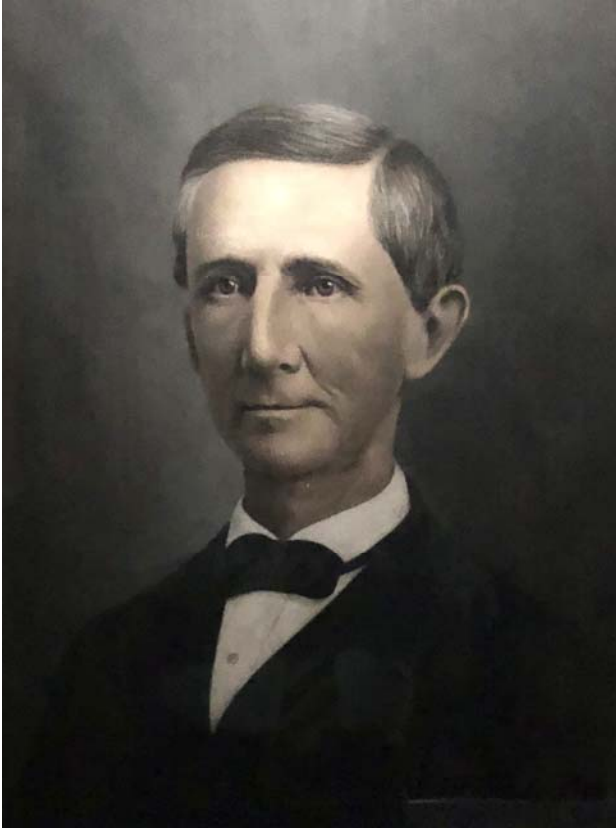


## **SAMUEL FARROW RICE**

Tenth Chief Justice: 1856-1859

BORN: June 2, 1816; Union District, South Carolina

DIED: January 3, 1890; Montgomery, Alabama



***Portrait by Unknown Artist  
Pastel on Paper, Unknown Date***

***Donated by Ms. Ellen Gillette, 2022***

A native of South Carolina, Samuel Farrow Rice graduated from South Carolina College in 1833. He read law and was admitted to the South Carolina Bar in 1837. The following year he moved to Talladega, Alabama and opened a law office.

In 1840 and 1841, Rice represented Talladega County in the General Assembly. He conducted unsuccessful races for Congress in 1841, 1847, and 1851.

Rice moved to Montgomery in 1852. On January 1, 1855, he took his seat as a judge on the Supreme Court, having been elected by the General Assembly on February 1, 1854. In 1856, he succeeded George Goldthwaite as Chief Justice.

After resigning from the bench in 1859, Rice resumed his law practice. That same year he was elected to the state House of Representatives. During the War Between the States he represented Montgomery and Autauga counties in the state Senate. After the end of the War, he joined the Republican party and served as a member of the Constitutional Convention of 1875. The following year, he was again elected to represent Montgomery County in the General Assembly. Rice married Amanda Butler in 1835. Three years after her death in 1869 he married Mary Ellen Fitzgibbon.

***Junius Moore Riggs Collection***

***Location: Antebellum Gallery, 3rd Floor, Heflin-Torbert Judicial Building***