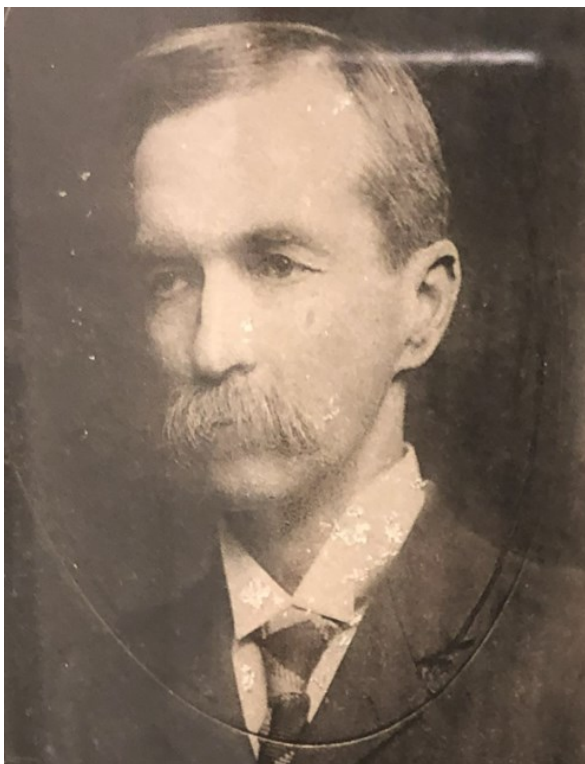


HENRY AUGUSTUS SHARPE

Associate Justice: 1898-1904

BORN: June 10, 1848; Morgan County, Alabama

DIED: August 10, 1919; Birmingham, Alabama



***Biographical File
Alabama Supreme Court and State
Law Library***

A native of Morgan County, Alabama, Henry Augustus Sharpe, son of William and Lucy Gayle Reese Sharpe, grew up near Decatur, Alabama. He received a LL.B. from Cumberland University, Lebanon, Tennessee in 1870. From 1878-1879, he was a representative from Morgan County in the General Assembly. He moved to Birmingham in 1881 and formed a law partnership with James Weatherly, Esq., known as Sharpe & Weatherly.

After the creation of the City Court of Birmingham in 1884, Governor O'Neal appointed Sharpe as their first judge. He remained in this position until 1898, when he was elected to the Supreme Court of Alabama, serving as an associate justice until 1904.

After his term on the Alabama Supreme Court, Sharpe resumed the private practice of law and was elected City Court Judge. He served in this position until 1916, when he was elected as a judge on the Tenth Judicial Circuit.

Sharpe married Mary Mae Hansell in 1875, and they had four children.