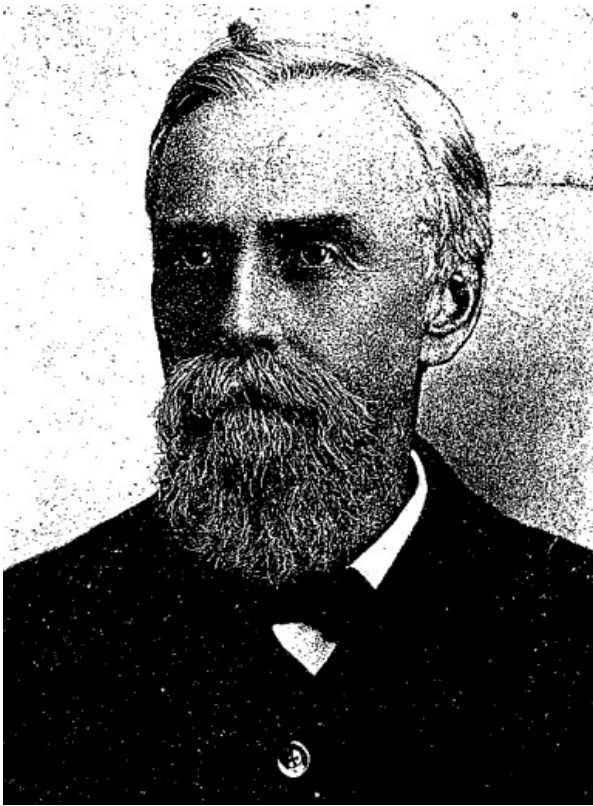


THOMAS WILKES COLEMAN

Associate Justice: 1890-1898

BORN: March 24, 1833; Eutaw, Alabama

DIED: November 9, 1920; Eutaw, Alabama



*Biographical File
Alabama Supreme Court and State
Law Library*

A native of Hale County, Alabama. Thomas Wilkes Coleman attended the Greene Springs Academy conducted by Dr. Henry Tutwiler. He graduated from Princeton University in 1853. He studied law under Stephen F. Hale at Eutaw, and was admitted to the practice by the Supreme Court in 1855. He served as mayor of Eutaw during his early professional career.

In 1860, Coleman moved to Greensboro and practiced law at Butler in Choctaw County, then moved to Meridian, Mississippi. After recuperating from meningitis in about 1885, he moved back to Eutaw.

In 1865, Coleman was elected a member of the Constitutional Convention, which framed what is known as the "Constitution of 1865." Also in 1865, he was elected by the Alabama legislature to the office of solicitor for the Fifth Circuit. He was appointed to that office in 1878 to fill an unexpired term and was re-elected in 1880 and in 1886.

In August 1890, he was appointed to the Supreme Court of Alabama to serve as an associate justice.

Coleman married Frances Jane Wilson, and they had six sons and five daughters.